



SECURE EVIDENCE STORAGE SINCE 1996

Known by the evidence we keep.™

Contact Us:
Randy Turtle
P: 310.456.8157
F: 310-456-8159

turtle@safestoreusa.com
www.SafeStoreUSA.com



EVIDENCE RISKS & HAZARDS FROM CARGO CONTAINER STORAGE

The use of cargo containers increases the risk of evidence contamination and degradation due to climate and exterior environmental factors. In addition, to the problems caused by climate, one should consider the additional costs associated with using containers for evidence storage. For example, crates will need to be individually climatized (HVAC), alarmed and monitored.



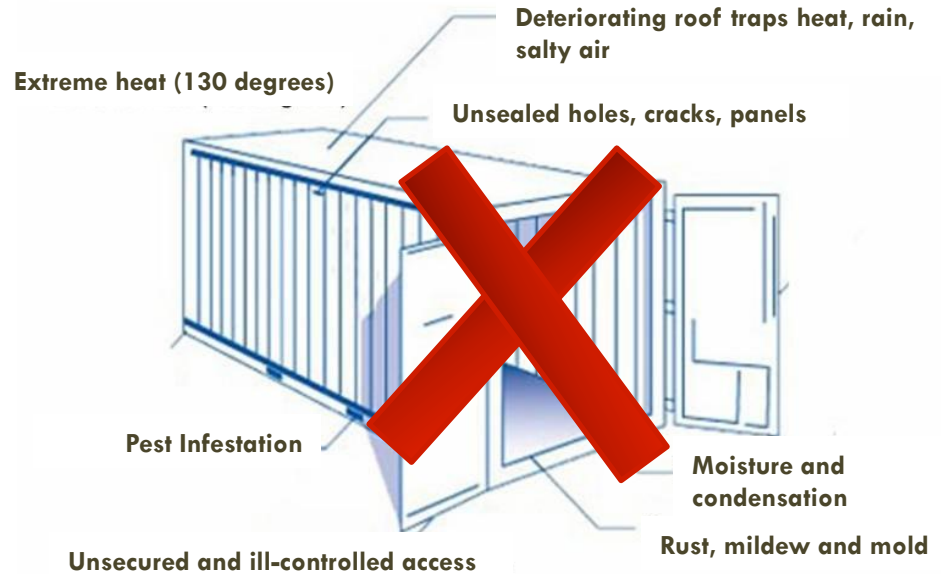
CLIMATE CONSIDERATIONS: DEGRADATION

- **HOT METAL BOX**
 - All the moisture evaporates as the container heats up and can't escape so it forms moisture – *moisture and condensation can ruin evidence*
 - **Overheating:** Sun beats down and can get as hot as 130-140 degrees



- **MOISTURE DAMAGE** is a real threat to maintaining the integrity of evidence
 - **DNA Storage Degradation/Contamination:** DNA must be in controlled climate to keep evidence safe free of moisture
 - **Humidity:** On muggy or humid day the moisture gets trapped in the box
 - **Leaks:** Moisture gets trapped and forms droplets of water - - water can't escape so it ends up dripping on merchandise
 - **Equipment Damage:** Computers must be in controlled climate, or servers will crash

EVIDENCE RISKS & HAZARDS FROM CARGO CONTAINER STORAGE



CONTAMINATION	DEGRADATION	COMPROMISED EVIDENCE
---------------	-------------	----------------------

CLIMATE CONSIDERATIONS: CAUSES OF DEGRADATION (continued)



- **Exterior Climate Conditions:** Fluctuating Temperatures – No ability to control exterior storage climate conditions, even more severe in rainy season (moisture, rust, and damage)
 - **NOTE:** *There are no water/moisture absorption tactics that work when storing evidence in cargo containers. Desenex, baby powder, flour and cornstarch are not the answers.*
 - **Pest Infestation:** Pest can easily access the cargo container through openings part of container design, and through entryways created by the elements such as rust-based erosion.



- **BIOLOGICAL EVIDENCE**
 - Biological evidence stored long-term in cargo containers poses far more serious threats to evidence degradation.
 - Evidence stored in cargo containers (especially long-term) cause a higher rate of degradation because of fluctuating temperature changes (60 to 75-degree temperature range)

Examples: hair cells, skin cells, bone, etc.